



BRAZILIAN JOURNAL OF MICROBIOLOGY

<http://www.bjmicrobiol.com.br/>



Environmental Microbiology

Variations in culturable bacterial communities and biochemical properties in the foreland of the retreating Tianshan No. 1 glacier

Xiukun Wu^{a,b}, Gaosen Zhang^{a,b}, Wei Zhang^{a,b}, Guangxiu Liu^{a,b,*}, Tuo Chen^{b,c}, Yun Wang^{a,b}, Haozhi Long^a, Xisheng Tai^a, Baogui Zhang^{a,b}, Zhongqin Li^c

^a Chinese Academy of Sciences, Northwest Institute of Eco-Environment and Resources, Key Laboratory of Desert and Desertification, Lanzhou, China

^b Key Laboratory of Extreme Environmental Microbial Resources and Engineering, Lanzhou, Gansu Province, China

^c Chinese Academy of Sciences, Northwest Institute of Eco-Environment and Resources, State Key Laboratory of Cryospheric Sciences, Lanzhou, China

ARTICLE INFO

Article history:

Received 4 June 2015

Accepted 24 October 2016

Available online xxx

Associate Editor: Iêda de Carvalho Mendes

Keywords:

Tianshan No. 1 glacier

Foreland

Culturable bacteria

Soil biochemical characteristics

ABSTRACT

As a glacier retreats, barren areas are exposed, and these barren areas are ideal sites to study microbial succession. In this study, we characterized the soil culturable bacterial communities and biochemical parameters of early successional soils from a receding glacier in the Tianshan Mountains. The total number of culturable bacteria ranged from 2.19×10^5 to 1.30×10^6 CFU g⁻¹ dw and from 9.33×10^5 to 2.53×10^6 CFU g⁻¹ dw at 4 °C and 25 °C, respectively. The number of culturable bacteria in the soil increased at 25 °C but decreased at 4 °C along the chronosequence. The total organic carbon, total nitrogen content, and enzymatic activity were relatively low in the glacier foreland. The number of culturable bacteria isolated at 25 °C was significantly positively correlated with the TOC and TN as well as the soil urease, protease, polyphenoloxidase, sucrose, catalase, and dehydrogenase activities. We obtained 358 isolates from the glacier foreland soils that clustered into 35 groups using amplified ribosomal DNA restriction analysis. These groups are affiliated with 20 genera that belong to six taxa, namely, Alphaproteobacteria, Betaproteobacteria, Gammaproteobacteria, Actinobacteria, Bacteroides, and Deinococcus-Thermus, with a predominance of members of Actinobacteria and Proteobacteria in all of the samples. A redundancy analysis showed that the bacterial succession was divided into three periods, an early stage (10a), a middle stage (25–74a), and a late stage (100–130a), with the total number of culturable bacteria mainly being affected by the soil enzymatic activity, suggesting that the microbial succession correlated with the soil age along the foreland.

© 2018 Published by Elsevier Editora Ltda. on behalf of Sociedade Brasileira de Microbiologia. This is an open access article under the CC BY-NC-ND license (<http://creativecommons.org/licenses/by-nc-nd/4.0/>).

<https://doi.org/10.1016/j.bjm.2018.01.001>

1517-8382/© 2018 Published by Elsevier Editora Ltda. on behalf of Sociedade Brasileira de Microbiologia. This is an open access article under the CC BY-NC-ND license (<http://creativecommons.org/licenses/by-nc-nd/4.0/>).

Introduction

Over the past 100 years, the average global temperature has increased by 0.74°C ,¹ and one consequence of this temperature increase is that glaciers are retreating in many mountainous areas of the world. As the glaciers retreat, the newly exposed land is a new habitat for microorganisms² derived from the air, clouds, snow, rain, and runoff waters from the glacier body in addition to autochthonous microorganisms.³ Bacterial communities may be key determinants of glacier foreland ecosystem stability and function because of their important roles in soil development, biogeochemical cycles and heterotrophic activities. Microbial communities change along the soil age gradient of a glacial foreland. Sigler et al.⁴ found that the number of dominant organism types and community evenness decreased with succession, but others found that the phylotype number, diversity, and evenness increased over time.^{2,5} However, most of those studies are focused on Polar and European mountain areas; therefore, studies on the bacterial community, soil biochemical properties and the correlation between bacteria and soil biochemical properties along chronosequences in such high Asian regions as the Tianshan Mountains are still needed.

The Tianshan No. 1 glacier is located in the Eastern Tianshan Mountains of Central Asia, mountains that are surrounded by desert.⁶ The climate in this area is a classical continental climate, and wind is an important climatic factor in the upper elevations of the mountains.⁷ The Tianshan No. 1 glacier has been studied intensively from a glaciological point of view since 1959,⁸⁻¹⁰ when the Tianshan Glaciological Station was built. Because of the availability of extensive glaciological data and detailed glacier retreat data, this area is an ideal location for the study of microbial distribution and growth related to both climatic and other environmental factors.^{11,12} Although the study of microorganisms in this area is very important, few studies have been performed. Bai et al.¹³ reported the bacterial diversity from permafrost in the Tianshan Mountains, and Yang et al.¹⁴ studied the permafrost bacterial and archaeal community structures in the same area. Sheng et al.¹⁵ first described the indigenous endophytic bacteria within subnival plants of the Tianshan Mountains. Wang et al.¹⁶ reported microbial biomass and soil enzyme activity variations along chronosequences, and Wu et al.¹¹ used pyrosequencing to analyze the bacterial diversity along chronosequences. However, studies regarding the variation of the culturable bacterial communities and biochemical characteristics along chronosequences in the Tianshan Mountains are not available, and thus fundamental knowledge on the culturable bacterial communities and biochemical characteristics in the Tianshan No. 1 glacier forelands is lacking.

In this study, we present data regarding the soil biochemical properties and diverse bacteria cultured using samples from the Tianshan No. 1 glacier forelands. The results could lead to a better understanding of the initial colonization and

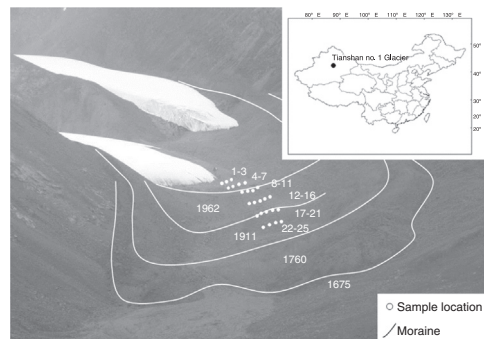


Fig. 1 – Map of sampling position.

succession patterns of microorganisms and soil development and the correlation between bacteria and soil biochemical properties along chronosequences in a high Asian region. Our aims were (1) to investigate the soil biochemical properties and culturable bacterial abundance variations along a chronosequence, (2) to determine the culturable bacterial community variations by using a low-nutrient medium cultured at 4°C and 25°C , and (3) to examine the correlations between the abundance of culturable bacteria and the soil biochemical properties with increasing soil age.

Materials and methods

Study site and sampling

The Tianshan Mountains extend through China, Kyrgyzstan and Kazakhstan in Central Asia and have 15,953 glaciers with a total area of $15,416\text{ km}^2$.¹⁷ The sample sites were located at Tianshan No. 1 glacier (N $43^{\circ}06'$, E $86^{\circ}48'$), 120 km southwest of Urumchi, China (Fig. 1). The top elevation at this glacier is 4486 m. The samples were collected at the east branch of Tianshan No. 1 glacier foreland along the chronosequence in front of the retreating glaciers. Twenty-five soil samples were collected in August 2010. These soil samples represent 6 periods: sites 1 to 3, sites 4 to 7, sites 8 to 11, sites 12 to 16, sites 17 to 21, and sites 22 to 25 represent 10a, 25a, 60a, 74a, 100a, and 130a, respectively. The succession time of every sampling site was determined using the annual glacier retreat observation data (from 1959 to 2010) from the Tianshan Glaciological Station (Chinese Academy of Sciences) and lichenometric chronology data (from 1958 to 1538).¹⁸ Each soil sample consisted of three subsample cores at a 5 cm depth collected at random in an area approximately $2\text{ m} \times 2\text{ m}$; the samples were mixed after the larger gravel had been removed. Pioneer plants appeared in the deglaciated soil within 10–100 years, and vegetation developed after 100 years of deglaciation. Successional species arriving within 10–100 years included *Cancrinia tianshanica*, *Bryophyta* spp., *Poa tianshanica*, *Draba nemorosa*, *Saxifraga hirculus* L., *Melandrium apricum*, *Leontopodium leptopodioides*, *Saussurea gnaphalodes*, *Crepis flexuosa*, *Rhodiola coccinea*, *Oxyria digyna*, and *Saussurea involucrata*, whereas *Senecio thian-shanicus*, *Polygonum viviparum*, and *Pedicularis* spp. additionally appeared outside the glacier foreland. The soil samples were

* Corresponding author at: Key Laboratory of Desert and Desertification, Northwest Institute of Eco-Environment and Resources, Chinese Academy of Sciences, Donggang West Road No. 320, Lanzhou 730000, China.
E-mail: liugx@lzb.ac.cn (G. Liu).

placed in a sterile soil box and kept on ice during transport to the laboratory and then analyzed immediately.

Biochemical analyses of the soils

The soil water content was measured by a weight loss method after 48 h at 80 °C in a drying oven. The soil pH of soil: double-distilled water (1:1 w/v) was measured using an acidity meter (Sartorius PT-10, Germany).¹⁹ After air-drying and grinding to allow passage through a 100 mesh sieve, the soil organic C and total N were determined using an elemental analyzer (Elementar Vario-EL, Germany).

All of the enzymatic preparations were performed at 0–4 °C. The soil enzymes urease, sucrase, protease, polyphenol oxidase, catalase, and dehydrogenase were measured. The activity of urease was measured according to a modified method described by Taylor et al.,²⁰ and the urease activity was expressed as 1 mg ammonia-N/g dry weight (dw) soil per 24 h. The dehydrogenase activity was determined by the reduction of 2-*p*-iodo-nitrophenyl-phenyltetrazolium chloride (INT) to iodo-nitrophenyl formazan (INTF) using the method of Taylor et al.,²⁰ and the activity was expressed as 1 µg INTF/g dw soil per 24 h. The catalase activity was determined by measuring the O₂ absorbed by KMnO₄ after the addition of H₂O₂ to the reaction mixture.²¹ The protease activity was measured according to Nannipieri et al.²² and Garcia-Gil et al.,²¹ and the activity was expressed as 1 mg N/g dw soil per 24 h. The sucrase activity was determined according to the method by Schinner,²³ and the activity was expressed as 1 mg glucose/g dw soil per 24 h. The polyphenol oxidase activity was measured according to Saiya-Cork et al.,²⁴ and the activity was expressed as 1 mg pyrogallol/g dw soil per 24 h.

Bacterial isolation and cultivation

Because a cultivation strategy using a nutrient-rich medium is rather selective, favoring fast- over slow-growing bacterial species,²⁵ a low-nutrient medium, PYGV (DSMZ medium 621, <http://www.dsmz.de>), was used to isolate the bacteria. The bacterial cultivation and isolation were performed according to the method of Zhang et al.¹⁹ Soil samples (5 g) were placed in a 250 mL flask containing 45 mL of autoclaved 0.85% NaCl solution with glass beads and shaken at 150 rpm at 4 °C for 30 min. After this treatment, 1 mL of suspended cell and soil particle subsamples were diluted from 10-fold to 10⁻⁴ with autoclaved 0.85% NaCl solution. A 100 µL aliquot of the dilution was plated on PYGV medium and incubated at 25 °C for one week or 4 °C for three weeks. The inoculation procedure was prepared in triplicate for each dilution. A sterilized soil sample that had been autoclaved (121 °C for 2 h) was used as a negative control. Subsequently, the colony forming units (CFU) were calculated as the averages of the triplicate plates. Distinct colonies on the plates were restreaked onto PYGV agar plates and then immediately preserved at –70 °C in liquid medium with 15% glycerol.

Amplified ribosomal DNA restriction analysis (ARDRA)

ARDRA was used to group the 358 isolates. The genomic DNA was extracted and purified using an AxyPrep Bacte-

rial Genomic Miniprep Kit (AXYGEN, USA) according to the manufacturer's instructions. Approximately 20 ng of DNA was amplified with 27F (5'-AGAGTTTGATCCTGGCTCAG-3') and 1492R (5'-GGTTACCTGTTTACGACTT-3'), as described by Zhang et al.,¹⁹ in a total volume of 50 µL. The reaction contained 2 units of Taq DNA polymerase (Fermentas), 1× Taq Buffer, 3 mM MgCl₂, 0.2 mM dNTP, and 0.4 µM each primer. After an initial step at 94 °C for 3 min, 30 cycles of 94 °C for 1 min, 58 °C for 1 min, and 72 °C for 1.5 min were performed, with a terminal 10 min extension at 72 °C.

A 10 µL aliquot of the PCR products was double digested with restriction enzymes *Hae*III and *Alu*I (MBI Fermentas) by 1.5 U of each restriction enzyme and 1 µL of 10× Tango Buffer at 37 °C for 16 h. The enzymes were inactivated by heating the preparations at 65 °C for 20 min, and the products were separated using 2.5% agarose gel (wt/vol) electrophoresis in TAE buffer containing 0.5 µg/mL of ethidium bromide. A 50 bp ladder was used as a marker.

Sequence and phylogenetic analysis

Based on the amplified ribosomal DNA restriction analysis (ARDRA) of the isolates, one representative strain of each group was selected for sequence determination of the 16S rRNA gene. Three universal primers, 27F (5'-AGAGTTTGATCCTGGCTCAG-3'), 517F (5'-CCAGCAGCCGCGGTAAT-3'), and 907F (5'-AAACTCAAATGAATTGACGGG-3'), were utilized for sequencing.¹⁹

The 16S rRNA gene sequence classifications were identified using the 16S rRNA training set 16 reference databases with the RDP Classifier method (<http://rdp.cme.msu.edu/>) and aligned against representative reference sequences of the most closely related members obtained from the 16S rRNA database in NCBI. CLUSTALW 1.81 software was then used to perform the multiple alignment²⁶ using the method of Jukes and Cantor to calculate the evolutionary distances. The phylogenetic dendrograms were constructed using the neighbor-joining method,²⁷ and the tree topologies were evaluated by performing bootstrap analysis of 1000 data sets using the MEGA4.1 package.²⁸

Data analysis

The correlation coefficients (*R*) and their *p* values were calculated by the Pearson method using SPSS 13.0 (SPSS Inc., Chicago, IL, USA). The significance levels were within confidence limits of 0.05 or less. The data presented are the means of at least three independent experiments and are expressed as the mean ± SE. Comparisons between the mean values were performed using the least significant difference (LSD test) at *p* < 0.05. The number of each different type of colony appearing on the plates was counted when the CFU were calculated. Combining the ARDRA and sequence analysis results, the bacterial taxa abundances were determined. The analysis of culturable bacterial taxa abundance combined with the environment parameters, such as pH, C, N, and soil enzyme activity, was performed using CANOCO (version 4.5, Microcomputer Power, Ithaca, NY, USA). An initial detrended correspondence analysis (DCA) of culturable bacterial taxa abundance revealed that the data exhibited a linear (Lengths

Table 1 – The number of culturable bacteria and soil biochemical parameters of the successional sites along the chronosequences.

Samples	Soil age after deglaciation (years)	4C	25C	pH	Organic C (% dw)	Total N (% dw)	C/N ratio (w/w)
1–3	10a	13.05 ± 11.66a	9.33 ± 0.44b	8.41 ± 0.084a	0.438 ± 0.018a	0.047 ± 0.005a	9.60 ± 1.03b
4–7	25a	8.39 ± 3.61a	12.39 ± 0.54ab	7.69 ± 0.046bc	0.503 ± 0.092a	0.055 ± 0.010a	9.11 ± 0.11b
8–11	60a	2.43 ± 0.92a	14.86 ± 0.41ab	7.86 ± 0.034b	0.523 ± 0.040a	0.040 ± 0.005a	13.45 ± 1.31a
12–16	74a	3.21 ± 0.85a	15.44 ± 0.25ab	7.54 ± 0.039bcd	0.809 ± 0.190a	0.068 ± 0.016a	12.07 ± 0.85ab
17–21	100a	2.19 ± 1.15a	17.46 ± 0.59ab	7.20 ± 0.052d	0.751 ± 0.197a	0.062 ± 0.012a	12.02 ± 1.42ab
22–25	130a	4.57 ± 0.53a	25.32 ± 0.38a	7.32 ± 0.060cd	1.600 ± 0.110a	0.127 ± 0.089a	13.30 ± 1.22a

Results are given as the means ± SE. Different suffix letters indicate values that are significantly different from one another (ANOVA, $p < 0.05$). 4C and 25C denote the number of culturable bacteria at 4 °C and 25 °C ($\times 10^5$), respectively.

of gradient <3), rather than a unimodal, trend, which indicated that redundancy analysis (RDA) should be used.²⁹ The total number of culturable bacteria and taxa abundance in the different aged soils were clustered by using the hierarchical cluster method (SPSS 13.0).

Nucleotide sequence accession numbers

The 16S rRNA gene sequences of the 35 representative isolated strains were deposited in GenBank. The sequences from the bacterial libraries were assigned to accession numbers: JN662509–JN662543.

Results

The abundance of culturable bacteria in the soils

The total number of the culturable bacteria ranged from 2.19×10^5 to 1.30×10^6 CFU g^{-1} dw and from 9.33×10^5 to 2.53×10^6 CFU g^{-1} dw at 4 °C and 25 °C, respectively. The total number of culturable bacteria isolated at 4 °C decreased along the chronosequence, but not significantly ($p = 0.09$), whereas the number of bacteria isolated at 25 °C significantly increased along the chronosequence ($p = 0.003$). The number of culturable bacteria in the 10a soil isolate at 4 °C was 1.4 times that at 25 °C; at later ages, the number isolated at 4 °C was lower than at 25 °C. At the 130a age, the number isolated at 25 °C was 5.5 times that isolated at 4 °C (Table 1).

Biochemical properties of the soils

The soil pH values decreased significantly ($p = 0.04$) from 8.41 to 7.32 with the chronosequence. The soil organic C and total N content were very low at all ages of the retreating glacier, ranging from 0.438% to 1.600% and from 0.040% to 0.127%, respectively. The soil organic C significantly increased ($p = 0.03$) along the chronosequence, and the soil total N also increased along the chronosequence, but not significantly ($p = 0.07$). The soil C/N ratio showed an increasing trend with the soil age ($p = 0.06$).

Soil enzyme activities integrate information about microbial status and soil physicochemical conditions³⁰ and are often used as an indicator of the functioning of soil ecosystems.³¹ The soil enzyme activity significantly increased along the soil age gradient, including catalase, dehydrogenase, polyphenoloxidase, protease, sucrase and urease ($p = 0.015, 0.004, 0.017, 0.045, 0.027, \text{ and } 0.023$, respectively) (Tables 1 and 2).

ARDRA and phylogenetic analyses

Using ARDRA, all 358 isolates cultured at 25 °C and 4 °C were clustered into 35 groups. After comparing the 16S rRNA sequence of a representative strain from each group, the recovered bacteria clustered into six groups: Alphaproteobacteria, Betaproteobacteria, Gammaproteobacteria, Actinobacteria, Bacteroides, and Deinococcus-Thermus (Fig. 2).

Table 2 – The changes in enzyme activities in the soils of the successional sites along the chronosequences.

Samples	Soil enzyme activity					
	Catalase (mg N/g soil h)	Dehydrogenase (μ g INTF/g soil 24 h)	Polyphenol oxidase (mg pyrogallol/g soil 24 h)	Protease (mg N/g soil 24 h)	Sucrase (mg glucose/g soil 24 h)	Urease (mg N/g soil 24 h)
1–3	2.07 ± 0.108b	36.8 ± 7.08cd	0.403 ± 0.058c	0.233 ± 0.035a	1.04 ± 0.138bc	0.191 ± 0.036b
4–7	1.88 ± 0.501b	30.2 ± 1.25d	0.558 ± 0.045b	0.305 ± 0.046a	0.786 ± 0.187c	0.252 ± 0.029ab
8–11	2.73 ± 0.615b	42.8 ± 1.37bc	0.546 ± ± 0.059b	0.233 ± 0.042a	1.76 ± 0.150bc	0.283 ± 0.019ab
12–16	2.92 ± 0.274b	43.1 ± 4.03bc	0.589 ± 0.027b	0.346 ± 0.030a	2.24 ± 0.659ab	0.319 ± 0.020ab
17–21	2.82 ± 0.457b	51.5 ± 5.82ab	0.598 ± 0.031b	0.355 ± 0.074a	1.57 ± 0.513bc	0.273 ± 0.022ab
22–25	4.71 ± 0.320a	59.3 ± 2.25a	0.815 ± 0.068a	0.405 ± 0.068a	3.26 ± 0.299a	0.374 ± 0.100a

Results are given as the means ± SE. Different suffix letters indicate values that are significantly different from one another (ANOVA, $p < 0.05$).

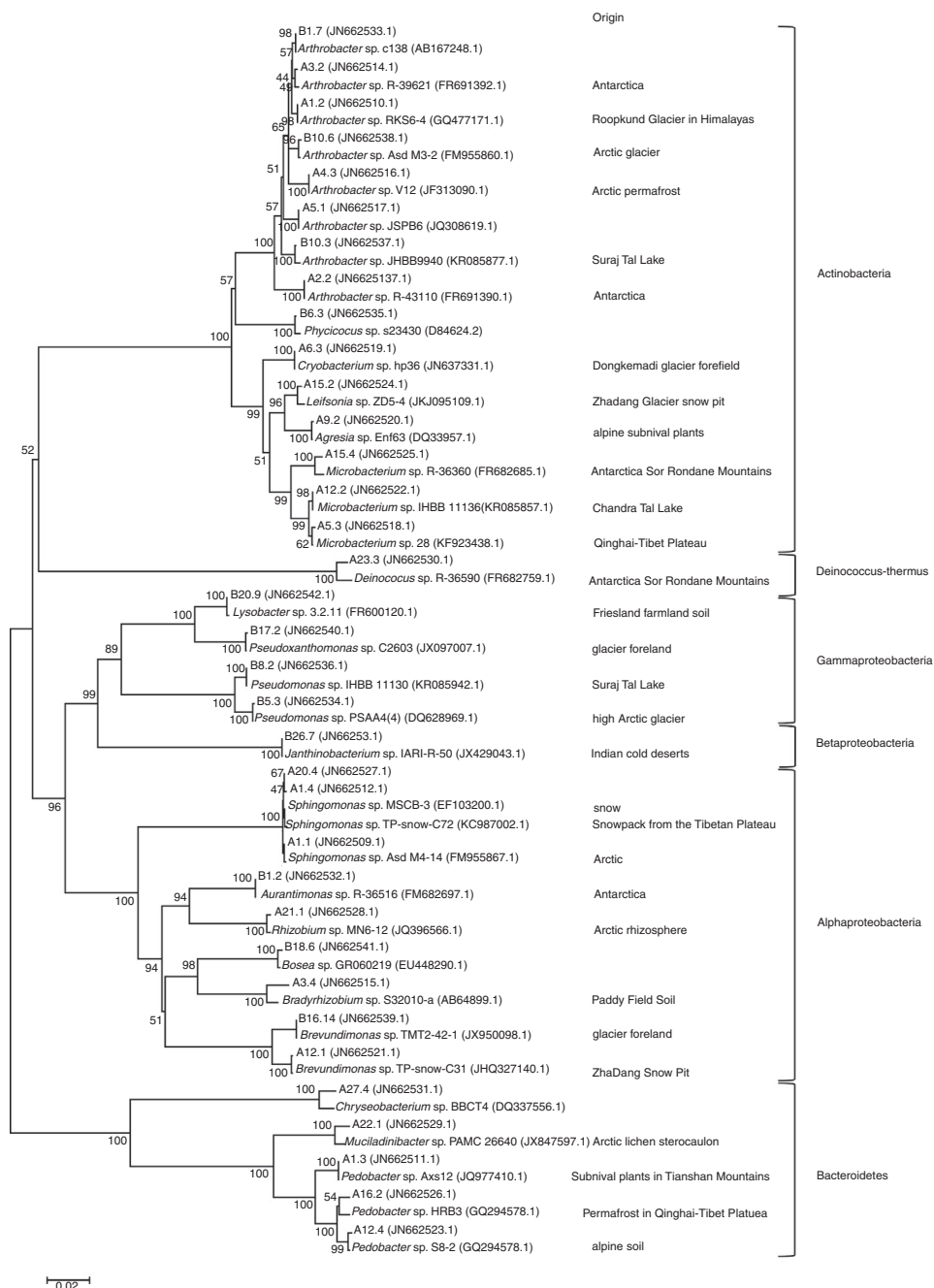


Fig. 2 – Phylogenetic dendrogram based on a comparison of the 16S rRNA gene sequences of the bacterial isolates from the Tianshan No. 1 glacier foreland and some of their closest phylogenetic relatives. The numbers on the tree indicate the percentages of bootstrap sampling derived from 1000 replications. The isolation source column lists the environments from which the closest phylogenetic relatives come.

The 35 studied isolates belonged to the following 20 genera: *Agresia*, *Arthrobacter*, *Aurantimonas*, *Bosea*, *Bradyrhizobium*, *Brevundimonas*, *Chryseobacterium*, *Cryobacterium*, *Deinococcus*, *Janthinobacterium*, *Leifsonia*, *Lysobacter*, *Microbacterium*, *Mucilaginibacter*, *Pedobacter*, *Phycococcus*, *Pseudomonas*, *Pseudoxanthomonas*, *Rhizobium*, and *Sphingomonas*. A total of eight isolates belonged to *Arthrobacter*, and three isolates belonged each to *Microbacterium*, *Pedobacter*, and *Sphingomonas*. *Brevundimonas* and *Pseudomonas* each had two isolates, and the other

genera were represented by one isolate each. As revealed by the phylogenetic tree construction, these bacteria were closely related to other cold-environment bacteria (Fig. 2).

Actinobacteria was the dominant taxon for the samples incubated at 4 °C, and the abundance remained constant along the chronosequence, whereas the abundance of Alphaproteobacteria and Bacteroidetes were relatively lower than Actinobacteria. The *Deinococcus-Thermus* group was only found in the 100a soil, and Betaproteobacteria and

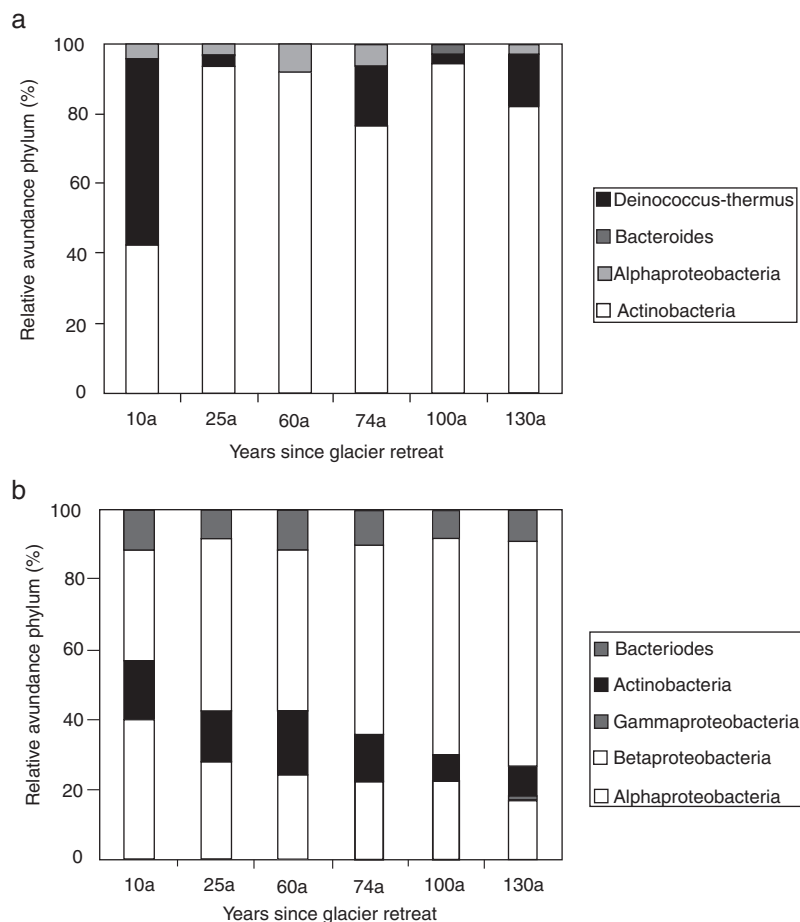


Fig. 3 – Variations of the taxa abundances of the culturable bacteria in soil samples along the chronosequences ((a) incubated at 4 °C, (b) incubated at 25 °C).

Gammaproteobacteria were not found in all of the samples (Fig. 3a). However, the species richness at 25 °C was higher than at 4 °C, including Actinobacteria, Bacteroides, and Alpha-, Beta- and Gammaproteobacteria. The Actinobacteria and Proteobacteria were the dominant taxa in the soils cultured at 25 °C, with the abundance of Proteobacteria significantly decreasing along the chronosequence ($p=0.02$) and the abundance of Actinobacteria significantly increasing along the chronosequence ($p=0.01$). The abundance of Bacteroides was relatively stable in all of the soil samples. The Betaproteobacteria were only found in the oldest soils, and the abundance was very low compared to the other taxa (Fig. 3b).

The correlations between the abundance of soil culturable bacteria and soil biochemical parameters

The total number of culturable bacteria in the soils cultured at 25 °C were significantly positively correlated with the soil total N ($p<0.05$), organic C ($p<0.01$), and soil catalase ($p<0.01$), dehydrogenase ($p<0.05$), polyphenoloxidase ($p<0.01$), protease ($p<0.05$), sucrase ($p<0.05$), and urease ($p<0.05$) activities. The soil pH value negatively correlated with the number of culturable bacteria but was not significant. This result indicated that the bacterial abundance increased with increasing soil N and organic C and increasing soil

enzyme activities and with decreasing soil pH values along the soil age gradient (Table 3). RDA axes 1 and 2 were found to explain 91.5% and 7.2%, respectively, of the overall variance, with the bacterial abundance and diversity data correlating with the environmental data. The number of culturable bacteria had a positive relationship with the soil enzyme activity, which was in good agreement with the SPSS correlation analysis. In addition, the bacterial communities of the 10a soils and 100–130a soils were separated from 25–74a, indicating that the bacterial succession in the Tianshan No. 1 glacier foreland should be divided into three stages: an early stage (10a), a middle stage (25–74a) and a late stage (100–130a) (Fig. 4). This result is consistent with the cluster analysis results (Fig. 5).

Discussion

The soil organic C, total N and enzyme activities increased along the exposure time gradient, while the soil pH decreased in the foreland of Tianshan No. 1 glacier. Similar results were reported at Dongkemadi glacier and Damma glacier.^{32,33} The total number of culturable bacteria recovered from the Tianshan No. 1 glacier foreland was higher than that of the permafrost in the same area ($2.5\text{--}6.0 \times 10^5 \text{ CFU g}^{-1}$)¹³ but similar to the number recovered

Table 3 – The correlations between the numbers of culturable bacteria at 25 °C and the soil biochemical parameters along the chronosequences.

	pH	Total N	Organic C	Protease	Polyphenol oxidase	Catalase	Urease	Dehydrogenase	Sucrase
25C	-0.769	0.889 ^b	0.947 ^a	0.820 ^b	0.972 ^a	0.956 ^a	0.914 ^b	0.900 ^b	0.895 ^b
pH		-0.571	-0.620	-0.864 ^b	-0.794	-0.579	-0.746	-0.646 ^b	-0.537
Total N			0.983 ^a	0.845 ^b	0.901 ^b	0.907 ^b	0.802	0.754	0.842 ^b
Organic C				0.834 ^b	0.933 ^a	0.967 ^a	0.869 ^b	0.845 ^b	0.917 ^b
Protease					0.859 ^b	0.724	0.779	0.688	0.681
Polyphenol oxidase						0.900 ^b	0.937 ^a	0.776	0.845 ^b
Catalase							0.884 ^b	0.913 ^b	0.969 ^b
Urease								0.734	0.914 ^b
Dehydrogenase									0.861 ^b

25C denotes the number of culturable bacteria at 25 °C.

^a The correlation is significant at the 0.01 level.

^b The correlation is significant at 0.05 (2-tailed).

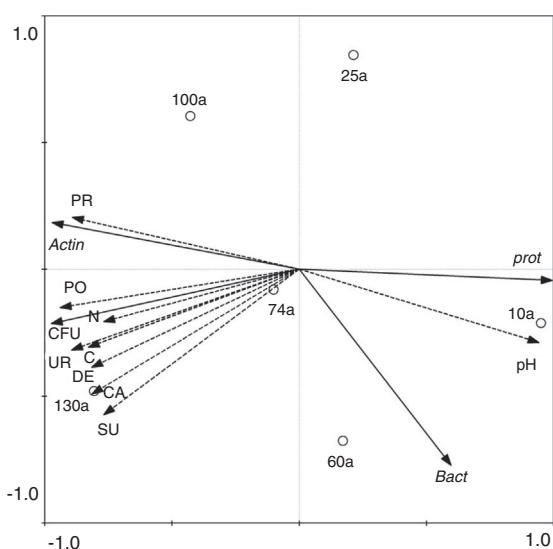


Fig. 4 – RDA biplot of the correlation between the taxa abundance of bacteria cultured at 25 °C and soil biochemical parameters. The taxa abundance of bacteria cultured at 25 °C (see Fig. 3b); soil biochemical parameters (see Table 2). Dash line arrows indicate the environmental variables (N, TN (%); C, OC (%); UR, urease; DE, dehydrogenase; SU, sucrase; CA, catalase; PO, polyphenol oxidase, PR, protease). Solid line arrows indicate the abundance of bacteria (Bact, bacteroides (%); Prot, proteobacteria (%); Actin, actinobacteria (%)).

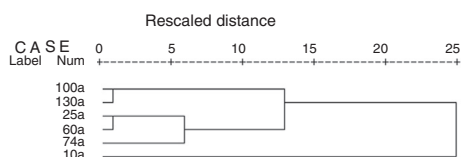


Fig. 5 – Hierarchical cluster analysis of culturable bacterial abundance and communities in soils of different ages.

from the Dongkemadi glacier foreland in the Central Tanggula Mountains (1.29×10^5 – 2.54×10^6 CFU g^{-1}).³² The soil organic C and total N have positive relationships with the soil enzyme

activities and microbial abundance in the Tianshan No. 1 glacier foreland. Zumsteg et al.³³ had findings similar to ours, reporting that the microbial community structure and enzymatic activity patterns are strongly conditioned by the successional stage in addition to the C and N contents of the glacier foreland soils. Furthermore, the incubation temperatures also affected the abundance and diversity of the bacteria. This finding is in accordance with the Lapanje et al.²⁵ study at the Damma glacier and Liu et al.³² at the Dongkemadi glacier. The reason for the difference may be that, although they were not the dominant bacteria at the early age (10a), psychrotolerant bacteria become dominant with increasing soil age.³⁴

The bacterial taxa and dominant phyla isolated from the Tianshan No. 1 glacier foreland were similar to the Qinghai-Tibet Plateau Jadang glacier foreland,³⁵ Dongkemadi glacier foreland in the Central Tanggula Mountains,³² Himalayan Pindari glacier foreland,³⁶ high Arctic permafrost soil,³⁷ and Antarctic permafrost soil.³⁸ This result indicated that similar cold environments accommodate similar microbes, which could be evidence to support the “environment select” theory. Some of the bacterial isolates from the Tianshan No. 1 glacier foreland may originate from the glacier and glacier sediment, while others may derive from the atmospheric dust from other environments.³⁹ The bacterial isolates from Tianshan No. 1 glacier foreland belong to six phyla. Bai et al.¹³ examined the phylogenetic diversity of bacteria from permafrost in the Tianshan Mountains using a culture-dependent method and found 4 phyla: Actinobacteria, Bacteroides, Firmicutes and Proteobacteria. Yang et al.¹⁴ studied the permafrost bacterial community structures and diversity using a denaturing gradient gel electrophoresis method and found 7 phyla of bacteria, including the Acidobacteria, Gemmatimonadetes and Chloroflexi phyla which were not found by Bai et al.¹³ Compared with the previous reports in this study area, the present study is the first to recover bacterial strains from the phylum Deinococcus-Thermus. Deinococcus-Thermus consists mainly of thermophiles,⁴⁰ and finding Deinococcus-Thermus in this cold and higher UV exposure environment is interesting and should be further studied for its cold-adaptation and UV-resistance mechanisms.

The dominate actinobacteria isolates in this study belonged to the genus *Arthrobacter*, which was the most

highly diverse group among our isolates and are typically the predominant genus in cold environments.^{19,25,32,37,38,41} Proteobacteria are a favored taxon in this initial ecosystem with a low nutrient content, because many of them have a range of metabolism.⁴² Some of the genera in our study have been reported by others to have particular weathering capabilities, such as *Sphingomonas* sp.,⁴³ *Pseudomonas* sp.⁴⁴ and *Janthinobacterium* sp.²⁵ These genera should be further investigated for these capabilities. Studies show a positive correlation between Proteobacteria and the soil pH; in contrast, a negative relationship between Actinobacteria and soil pH was reported by Philippot et al.⁴⁵

A previous study found that bacterial numbers depended mostly on the soil age after deglaciation in the Damma glacier foreland⁴⁶ and in the Lyman glacier foreland.⁴⁷ Liu et al.³² also found similar results. These results suggest that the number and activity of microbial populations increase with soil development after glacial retreat.⁴⁶ Other studies also reported that microbial abundance has significant correlations with soil enzyme activities in the mountain valley wetland,⁴⁸ reclaimed soil on a surface coal mine,⁴⁹ and paddy soil.⁵⁰ The RDA and hierarchical cluster analysis showed the same result, that the bacterial succession in the Tianshan No. 1 glacier can be divided into three successional periods: an early stage (10a), a middle stage (25–74a), and a late stage (100–130a). Similar results were reported by Huang et al.⁵¹ for copper mine tailings. These results indicate that soil microbes play a role in the development of the bare soil in the glacier foreland, suggesting that microbial succession correlates with the soil age along the foreland.

Conflicts of interest

The authors declare no conflicts of interest.

Acknowledgements

This work was funded by the Natural Science Foundation of China (Nos. 31500429, 31170465), the National Basic Research Program (973) of China (No. 2012CB026105), the China Post-doctoral Science Fund (2014M562477), and the Science and Technology Projects in Gansu Province (1506RJZA291) China.

REFERENCES

1. IPCC. *Climate Change 2007: Synthesis Report. Contribution of Working Groups I, II and III to the Fourth Assessment Report of the Intergovernmental Panel on Climate Change. Core Writing Team, Pachauri RK, Reisinger A.* Geneva: IPCC; 2007.
2. Schütte UME, Abdo Z, Foster J, et al. Bacterial diversity in a glacier foreland of the high Arctic. *Mol Ecol.* 2010;19:54–66.
3. Bauer H, Kasper-Giebl A, Löflund M, et al. The contribution of bacteria and fungal spores to the organic carbon content of cloud water, precipitation and aerosols. *AtmRe.* 2002;64:109–119.
4. Sigler WV, Crivii S, Zeyer J. Bacterial succession in glacial forefield soils characterized by community structure, activity and opportunistic growth dynamics. *Microb Ecol.* 2002;44:306–316.
5. Nemergut DR, Anderson SP, Cleveland CC, et al. Microbial community succession in an unvegetated, recently deglaciated soil. *Microb Ecol.* 2007;53:110–122.
6. Lee X, Qin D, Jiang G, Duan K, Zhou H. Atmospheric pollution of a remote area of Tianshan Mountain: ice core record. *J Geophys Res.* 2003;108:4406.
7. Williams MW, Tonnessen KA, Melack JM, Daqing Y. Sources and spatial variation of the chemical composition of snow in the Tien Shan, China. *China Ann Glaciol.* 1992;16:25–32.
8. Bolch T. Climate change and glacier retreat in northern Tien Shan (Kazakhstan/Kyrgyzstan) using remote sensing data. *Glob Planet Change.* 2007;56:1–12.
9. Li B, Zhu A, Yi C. Glacier change over the past four decades in the middle Chinese Tien Shan. *J Glaciol.* 2006;52:425–432.
10. Narama C, Käab A, Duishonakunov M, Abdrakhmatov K. Spatial variability of recent glacier area changes in the Tien Shan Mountains, Central Asia, using Corona (1970), Landsat (2000), and ALOS (2007) satellite data. *Glob Planet Change.* 2010;71:42–54.
11. Wu X, Zhang W, Liu G, et al. Bacterial diversity in the foreland of the Tianshan No. 1 glacier, China. *Environ Res Lett.* 2012;7:014038.
12. Zhang W, Zhang G, Liu G, Li Z, Chen T, An L. Diversity of bacterial communities in the snowcover at Tianshan Number 1 Glacier and its relation to climate and environment. *Geomicrobiol J.* 2012;29:459–469.
13. Bai Y, Yang D, Wang J, Xu S, Wang X, An L. Phylogenetic diversity of culturable bacteria from alpine permafrost in the Tianshan Mountains, northwestern China. *Res Microbiol.* 2006;157:741–751.
14. Yang D, Wang J, Bai Y, Xu S, An L. Diversity and distribution of the prokaryotic community in near-surface permafrost sediments in the Tianshan Mountains, China. *Can J Microbiol.* 2008;54:270–280.
15. Sheng H, Gao H, Xue L, et al. Analysis of the composition and characteristics of culturable endophytic bacteria within subnival plants of the Tianshan Mountains, Northwestern China. *Curr Microbiol.* 2011;62:923–932.
16. Wang X, Zhang T, Sun J, Zhang X, Li Z, Lou K. Ecological characterization of soil microflora in primary succession across glacier forefield: a case study of Glacier No. 1 at the Headwaters of Urumqi River. *Acta Ecol Sin.* 2010;30:6563–6570 (in Chinese with English abstract).
17. Wang S, Zhang M, Li Z, et al. Glacier area variation and climate change in the Chinese Tianshan Mountains since 1960. *J Geogr Sci.* 2011;21:263–273.
18. Chen J. Preliminary researches on lichenometric chronology of Holocene glacial fluctuations and on other topics in the headwater of Urumqi River, Tianshan Mountains. *Sci China Ser B.* 1989;32:1487–1500.
19. Zhang G, Ma X, Niu F, et al. Diversity and distribution of alkaliphilic psychrotolerant bacteria in the Qinghai-Tibet Plateau permafrost region. *Extremophiles.* 2007;11:415–424.
20. Taylor JP, Wilson B, Mills MS, Burns RG. Comparison of microbial numbers and enzymatic activities in surface soils and subsoils using various techniques. *Soil Biol Biochem.* 2002;34:387–401.
21. Garcia-Gil JC, Plaza C, Soler-Rovira P, Polo A. Long-term effects of municipal solid waste compost application on soil enzyme activities and microbial biomass. *Soil Biol Biochem.* 2000;32:1907–1913.
22. Nannipieri P, Pedrazzini F, Arcara PG, Piovaneli C. Changes in amino acids, enzyme activities, and biomasses during soil microbial growth. *Soil Sci.* 1979;127:26–34.
23. Schinner F, von Mersi W. Xylanase-, CM-cellulase- and invertase activity in soil: an improved method. *Soil Biol Biochem.* 1990;22:511–515.
24. Saiya-Cork KR, Sinsabaugh RL, Zak DR. The effects of long term nitrogen deposition on extracellular enzyme activity in

- an *Acer saccharum* forest soil. *Soil Biol Biochem.* 2002;34:1309–1315.
25. Lapanje A, Wimmersberger C, Furrer G, Brunner I, Frey B. Pattern of elemental release during the granite dissolution can be changed by aerobic heterotrophic bacterial strains isolated from Damma Glacier (central Alps) deglaciated granite sand. *Microb Ecol.* 2012;63:865–882.
 26. Thompson JD, Gibson TJ, Plewniak F, Jeanmougin F, Higgins DG. The CLUSTAL X windows interface: flexible strategies for multiple sequence alignment aided by quality analysis tools. *Nucleic Acids Res.* 1997;25:4876–4882.
 27. Saitou N, Nei M. The neighbor-joining method: a new method for reconstructing phylogenetic trees. *Mol Biol Evol.* 1987;4:406–425.
 28. Tamura K, Dudley J, Nei M, Kumar S. MEGA4: molecular evolutionary genetics analysis (MEGA) software version 4.0. *Mol Biol Evol.* 2007;24:1596–1599.
 29. Braak CJFt, Smilauer P. *CANOCO Reference Manual and CanoDraw for Windows User's Guide: Software for Canonical Community Ordination (Version 4.5)*; 2002. www.canoco.com.
 30. Sinsabaugh RL, Hill BH, Shah JF. Ecoenzymatic stoichiometry of microbial organic nutrient acquisition in soil and sediment. *Nature.* 2009;462:795–798.
 31. Ciarkowska K, Solek-Podwika K, Wierzchorek J. Enzyme activity as an indicator of soil-rehabilitation processes at a zinc and lead ore mining and processing area. *J Environ Manag.* 2014;132:250–256.
 32. Liu G, Hu P, Zhang W, et al. Variations in soil culturable bacteria communities and biochemical characteristics in the Dongkemadi glacier forefield along a chronosequence. *Folia Microbiol.* 2012;57:485–494.
 33. Zumsteg A, Luster J, Göransson H, et al. Bacterial, archaeal and fungal succession in the forefield of a receding glacier. *Microb Ecol.* 2012;63:552–564.
 34. Zhang G, Zhang W, Liu G, An L, Chen T, Li Z. Distribution of aerobic heterotrophic bacteria managed by environmental factors in glacier foreland. *J Glaciol Geocryol.* 2012;34:965–971 (in Chinese with English abstract).
 35. Yue J, Liu G, Zhang G, Zhang W, Xu S. Changes in soil properties and culturable bacteria diversity in Zhadang glacier foreland. *J Glaciol Geocryol.* 2010;32:1180–1185 (in Chinese with English abstract).
 36. Shivaji S, Pratibha MS, Sailaja B, et al. Bacterial diversity of soil in the vicinity of Pindari glacier, Himalayan mountain ranges, India, using culturable bacteria and soil 16S rRNA gene clones. *Extremophiles.* 2011;15:1–22.
 37. Hansen AA, Herbert RA, Mikkelsen K, et al. Viability, diversity and composition of the bacterial community in a high Arctic permafrost soil from Spitsbergen, Northern Norway. *Environ Microbiol.* 2007;9:2870–2884.
 38. Aislabie JM, Chhour K-L, Saul DJ, et al. Dominant bacteria in soils of Marble Point and Wright Valley, Victoria Land, Antarctica. *Soil Biol Biochem.* 2006;38:3041–3056.
 39. Hodson A, Anesio AM, Tranter M, et al. Glacial ecosystems. *Ecol Monogr.* 2008;78:41–67.
 40. Griffiths E, Gupta RS. Identification of signature proteins that are distinctive of the Deinococcus-Thermus phylum. *Int Microbiol.* 2007;10:201–208.
 41. Hinsia-Leasure SM, Bhavaraju L, Rodrigues JLM, Bakermans C, Gilichinsky DA, Tiedje JM. Characterization of a bacterial community from a Northeast Siberian seacoast permafrost sample. *FEMS Microbiol Ecol.* 2010;74:103–113.
 42. Hodkinson ID, Webb NR, Coulson SJ. Primary community assembly on land – the missing stages: why are the heterotrophic organisms always there first? *J Ecol.* 2002;90:569–577.
 43. Uroz S, Calvaruso C, Turpault MP, Pierrat JC, Mustin C, Frey-Klett P. Effect of the mycorrhizosphere on the genotypic and metabolic diversity of the bacterial communities involved in mineral weathering in a forest soil. *Appl Environ Microbiol.* 2007;73:3019–3027.
 44. Gorbushina AA. Life on the rocks. *Environ Microbiol.* 2007;9:1613–1631.
 45. Philippot L, Tschirko D, Bru D, Kandeler E. Distribution of high bacterial taxa across the chronosequence of two alpine glacier forelands. *Microb Ecol.* 2011;61:303–312.
 46. Sigler WV, Zeyer J. Microbial diversity and activity along the forefields of two receding glaciers. *Microb Ecol.* 2002;43:397–407.
 47. Ohtonen R, Fritze H, Pennanen T, Jumpponen A, Trappe J. Ecosystem properties and microbial community changes in primary succession on a glacier forefront. *Oecologia.* 1999;119:239–246.
 48. Bai J, Xu H, Xiao R, Gao H, Zhang K, Ding Q. Path analysis for soil urease activities and nutrient contents in a Mountain Valley Wetland, China. *Clean Soil Air Water.* 2014;42:324–330.
 49. Li J, Zhou X, Yan J, Li H, He J. Effects of regenerating vegetation on soil enzyme activity and microbial structure in reclaimed soils on a surface coal mine site. *Appl Soil Ecol.* 2015;87:56–62.
 50. Su J, Ding L, Xue K, et al. Long-term balanced fertilization increases the soil microbial functional diversity in a phosphorus-limited paddy soil. *Mol Ecol.* 2015;24:136–150.
 51. Huang L, Tang F, Song Y, et al. Biodiversity, abundance, and activity of nitrogen-fixing bacteria during primary succession on a copper mine tailings. *FEMS Microbiol Ecol.* 2011;78:439–450.